



# Moisture Measurement in Animal Feed

Moisture measurement in animal feed has varying ranges in the raw materials; proper measurement and control is critical to ensuring optimum efficiency and quality control. Maintaining the ability to allow immediate process adjustments during the manufacturing cycle allows for increased production, product quality and efficiency.

MoistTech utilizes near-infrared (NIR) technology that allows for a non-contact solution to provide accurate moisture content readings. Insensitive to material variations such as particle size, material height & color, the sensors provide a continuous, reliable reading with zero drift and no maintenance. There is a one-time calibration with a non-drift optical design allowing operational personnel to make immediate line adjustments based on real-time measurements.

Controlling the mixing/blending process and moisture levels of the feed in pellet form ensures the final product is consistently made with the highest quality and provides substantial savings in the production process by eliminating down time, wasted product and wear and tear on other equipment. Accurately calculating the amount of moisture present or that needs to be added to the mix for proper consistency allows the use to have full control over the production line and adjustments.

## INSTALL

The on-line sensors can be installed into any hopper, silo, material line, belt or screw conveyor and the moisture results are displayed onto an external display or PC.

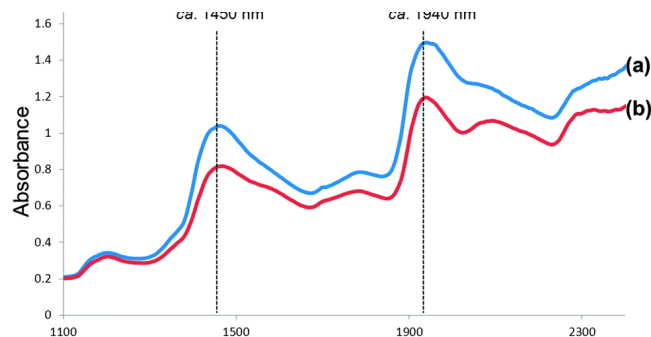
Stable, fixed moisture levels ensure that animal feed products maintain consistency and that product waste is minimized.

Installing a moisture measurement and control system prevents bad product due to undesirable moisture levels. Fine tuning the setup and process of the manufacturing line allows for instant improvements both in the product and in the efficiency in which it is produced.

## IMMEDIATE BENEFITS:

- Improved Product Quality
- Lower Waste & Energy Costs
- Process Optimization
- Increased Plant Efficiency
- Dryer Control
- Reduced Downtime

An ideal moisture control system accurately detects the moisture levels at different stages of the process, is easily maintained and has the ability to withstand even the harshest of manufacturing conditions. The IR-3000 series of sensors manufactured by MoistTech are specifically designed to be unaffected by ambient light or material variations to be able to provide continuous, repeatable, accurate readings to improve the manufacturing line and product.



“The addition of the MoistTech IR3000 has provided me with the ability to control our process by instantly increasing or decreasing material flow into the dryer. Prior to the MoistTech technology proved to be a guessing game and time consuming!”