



Moisture Measurement in Battery Film/Paste

Using state-of-the-art components to manufacture the IR-3000 series of sensors, MoistTech's equipment can be installed in the most extreme conditions. As a result of MoistTech's digital processing, only the IR-3000 series provides true data for both moisture and thickness application needs in battery film and paste.

MoistTech utilizes near-infrared (NIR) technology that allows for a non-contact solution to provide accurate moisture & coat weight content readings. Insensitive to material variations such as particle size, material height & color, the sensors provide a continuous, reliable reading with zero drift and no maintenance. There is a one-time calibration with a non-drift optical design allowing operational personnel to make immediate line adjustments based on real-time measurements.

The IR-3000 series sensor can measure not only the moisture content of battery paste and film but also has the capability to measure the thickness of micro-porous separator film, improving product quality and consistency.

Replacing slow, time-consuming off line sample testing frees up personnel time and delivers quick payback through reduced waste, faster start-up times, reduced targets for coat weight and separator film will increase the bottom line.

INSTALL

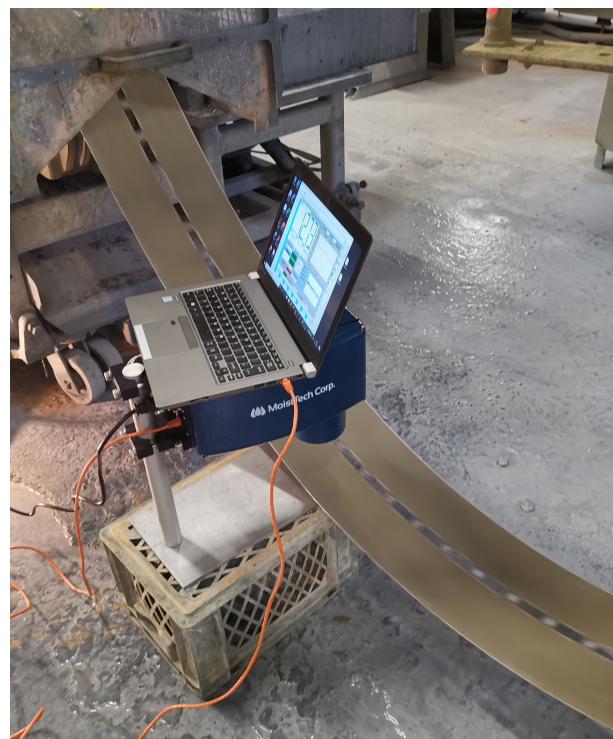
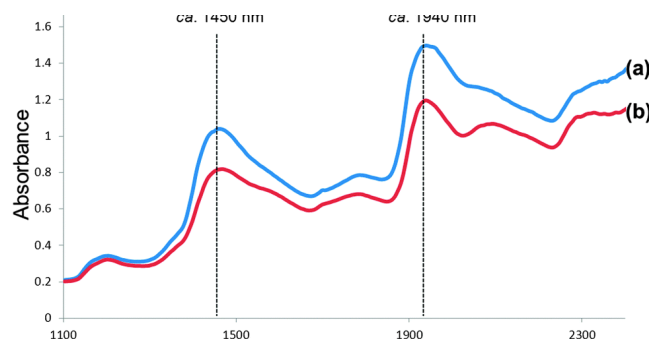
The on-line sensors can be installed into any material line, belt or screw conveyor and the moisture results are displayed onto an external display or PC.

Installing a moisture measurement and control system prevents bad product due to undesirable moisture levels. Fine tuning the setup and process of the manufacturing line allows for instant improvements both in the product and in the efficiency in which it is produced.

IMMEDIATE BENEFITS:

- Improved Product Quality
- Lower Waste & Energy Costs
- Process Optimization
- Increased Plant Efficiency
- Dryer Control
- Reduced Downtime

An ideal moisture control system accurately detects the moisture levels at different stages of the process, is easily maintained and has the ability to withstand even the harshest of manufacturing conditions. The IR-3000 series of sensors manufactured by MoistTech are specifically designed to be unaffected by ambient light or material variations to be able to provide continuous, repeatable, accurate readings to improve the manufacturing line and product.



“The system is working very well with an efficiency improvement of 100% in moisture control. We are also looking at promoting this to a best practice suitable for our other plants and production lines”