



Moisture Measurement in Beet Pulp/Sugar

Beet pulp is a fibrous byproduct from sugar beet with a main purpose of animal feed, specifically for livestock. Sugar beet processing includes pulp and molasses, which most of the sucrose is removed and the remaining products are mixed, dried and sold as livestock feed.

MoistTech utilizes near-infrared (NIR) technology that allows for a non-contact solution to provide accurate moisture content readings. Insensitive to material variations such as particle size, material height & color, the sensors provide a continuous, reliable reading with zero drift and no maintenance. There is a one-time calibration with a non-drift optical design allowing operational personnel to make immediate line adjustments based on real-time measurements.

Traditionally sold in pellet form or as dried flakes, beet pulp can be fed to older horses to ease chewing and acts as part of their balanced diet.

The drying process uses a large amount of energy and can be costly maintaining the industrial dryers. Installing a moisture sensor at the output of the dryer allows for complete control over the efficiency of the dryer, saving time, energy, money and increasing product quality. This control ensure the exiting material is always at the correct moisture level for the next stage of production or storage.

INSTALL

The on-line sensors can be installed into any hopper, silo, material line, belt or screw conveyor and the moisture results are displayed onto an external display or PC.

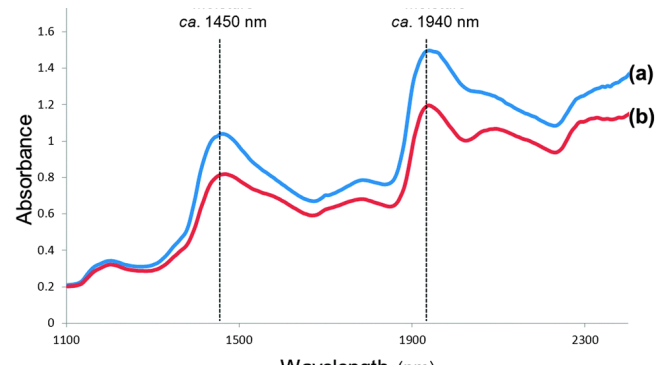
All of MoistTech's sensors are instant with hundreds of points of data measurements per second, providing real time accurate data.

Installing a moisture measurement and control system prevents bad product due to undesirable moisture levels. Fine tuning the setup and process of the manufacturing line allows for instant improvements both in the product and in the efficiency in which it is produced.

IMMEDIATE BENEFITS:

- Improved Product Quality
- Lower Waste & Energy Costs
- Process Optimization
- Increased Plant Efficiency
- Dryer Control
- Reduced Downtime

An ideal moisture control system accurately detects the moisture levels at different stages of the process, is easily maintained and has the ability to withstand even the harshest of manufacturing conditions. The IR-3000 series of sensors manufactured by MoistTech are specifically designed to be unaffected by ambient light or material variations to be able to provide continuous, repeatable, accurate readings to improve the manufacturing line and product.



“The addition of the MoistTech IR3000 has provided me with the ability to control our process by instantly increasing or decreasing material flow into the dryer. Prior to the MoistTech technology proved to be a guessing game and time consuming!”