



Moisture Measurement in Bio Coal

Bio coal, or biomass briquette, is made from agricultural, wooden and forestry waste with a high compression process without glues or binders, making it a 100% natural eco-friendly solid fuel that does not produce fossil carbon. Bio coal can provide a similar amount of energy as low-grade fossil coal and up to 80% more energy than wood pellets.

MoistTech utilizes near-infrared (NIR) technology that allows for a non-contact solution to provide accurate moisture content readings. Insensitive to material variations such as particle size, material height & color, the sensors provide a continuous, reliable reading with zero drift and no maintenance. There is a one-time calibration with a non-drift optical design allowing operational personnel to make immediate line adjustments based on real-time measurements.

Bio coal or biomass briquettes are often produced from waste such as sawdust, groundnut shells, cotton stalk, castor seed shells etc. A very low moisture and ash content makes the briquette preferable solid fuel, giving much high boiler efficiency due to low moisture and high density. Since Bio coal has such high density, it saves transport costs and space in storage.

INSTALL

The on-line sensors can be installed into any hopper, silo, material line, belt or screw conveyor and the moisture results are displayed onto an external display or PC.

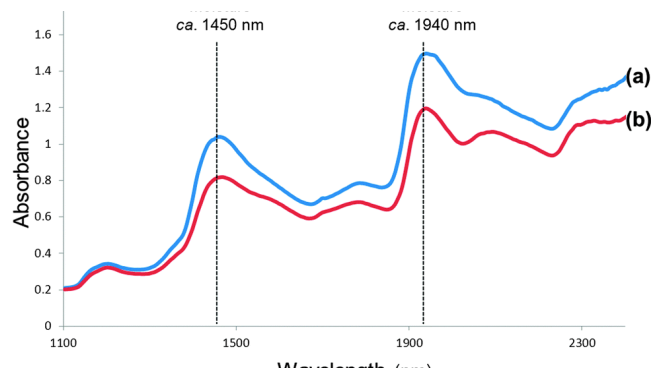
The moisture content is critical to ensure boiler efficiency and the ability for the final product to hold its quality and consistency.

Installing a moisture measurement and control system prevents bad product due to undesirable moisture levels. Fine tuning the setup and process of the manufacturing line allows for instant improvements both in the product and in the efficiency in which it is produced.

IMMEDIATE BENEFITS:

- Improved Product Quality
- Lower Waste & Energy Costs
- Process Optimization
- Increased Plant Efficiency
- Dryer Control
- Reduced Downtime

An ideal moisture control system accurately detects the moisture levels at different stages of the process, is easily maintained and has the ability to withstand even the harshest of manufacturing conditions. The CCS-3000 series of sensors manufactured by MoistTech are specifically designed to be unaffected by ambient light or material variations to be able to provide continuous, repeatable, accurate readings to improve the manufacturing line and product.



“The addition of the MoistTech IR3000 has provided me with the ability to control our process by instantly increasing or decreasing material flow into the dryer. Prior to the MoistTech technology proved to be a guessing game and time consuming!”